



Immunophenotyping Control

CD-Chex CD103™ Plus is the only commercially available positive procedural control that includes CD103, CD30, CD38, CD56, CD138 and cytoplasmic Lambda. The product possesses surface antigens and intracellular antigens detectable with fluorescent monoclonal antibodies by flow cytometry.

- Unique control with two distinct abnormal leukocyte populations: CD45 Positive and CD45 Negative
- Monitors reagent staining, erythrocyte lysis, sample preparation, and instrument performance

Stability (Store 2 °C - 10 °C)

| | |
|-----------------------|---------|
| Closed-vial stability | 90 days |
| Open-vial stability | 30 days |

Compatibility

BD Biosciences and Beckman Coulter® flow cytometry systems

Convenience

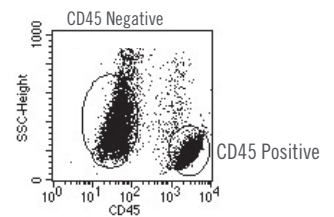
CD-Chex CD103 Plus eliminates the need for labs to hold and validate patient samples to use as a control for CD103, CD30, CD38, CD56, CD138, and cytoplasmic Lambda, saving the lab time and money.

Assayed Markers

| Phenotype | CD45 Phenotype | WBC Type |
|-----------|----------------|----------|
| CD38 | Positive | Abnormal |
| CD103 | | |

For Reference Use Only
Absolute WBC (x 10³/μL)

| | | |
|---------|----------|----------|
| CD30 | Negative | Abnormal |
| CD38 | | |
| CD56 | | |
| CD138 | | |
| cLambda | | |



Ordering Information

| Description | Catalog # |
|-------------|-----------|
| 1 x 1.0 mL | 213567 |
| 2 x 1.0 mL | 213568 |

STATS®

Interlaboratory Quality Control program features online accessibility with enhanced real-time reporting and improved account management capability. Open to all customers at no charge, the Streck *STATS* program includes personalized, easy-to-read reports that detail performance, identify trends and facilitate real-time prompt corrective action. More information can be found at www.streck.com.

FOR RESEARCH USE ONLY. NOT FOR USE IN DIAGNOSTIC PROCEDURES.



Tel. +41 44 456 33 33
igz.ch igz@igz.ch